



# AT-VMx Series

Cartridge/Replacement Stylus

---

## User Manual

# Applicable products

This user manual applies to the following products.

Product type	Product name
AT-VM760xSL AT-VM750xSH AT-VM745xML AT-VM740xML AT-VM530xEN AT-VM520xEB AT-VM510xCB	Dual Moving Magnet Stereo Cartridge
AT-VM610xMONO	Dual Moving Magnet Mono Cartridge
AT-VM670xSP	Dual Moving Magnet Cartridge for SP Records
AT-VM750xSH/H AT-VM740xML/H AT-VM520xEB/H	Dual Moving Magnet Stereo Cartridge with Headshell
AT-VMN60xSL AT-VMN50xSH AT-VMN45xML AT-VMN40xML AT-VMN30xEN AT-VMN20xEB AT-VMN10xCB AT-VMN70xSP	Replacement stylus

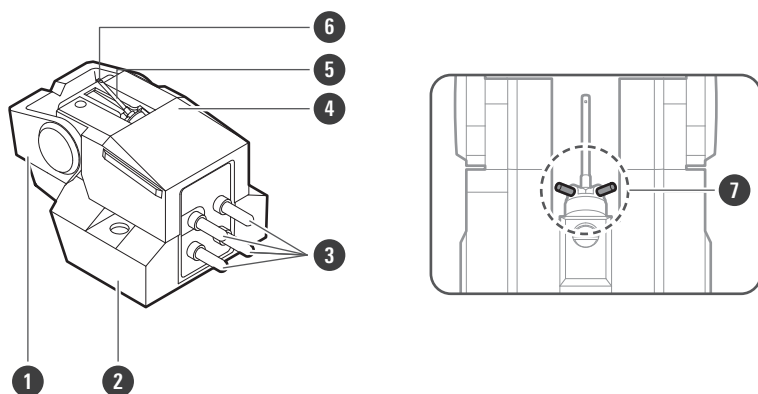
# Safety precautions

Although this product was designed to be used safely, failing to use it correctly may result in an accident. To ensure safety, observe all warnings and cautions while using the product.

- Keep the product out of the reach of small children to avoid accidents or malfunction.
- Do not put the product in a location where it is exposed to direct sunlight, near heating devices, or in places with high temperatures, high humidity, or high concentrations of dust to avoid malfunction.
- Do not touch the product's cantilever, stylus tip, and magnets to avoid malfunction.
- Do not attempt to disassemble or modify the product to avoid malfunction.
- Do not subject the product to strong impact to avoid malfunction.

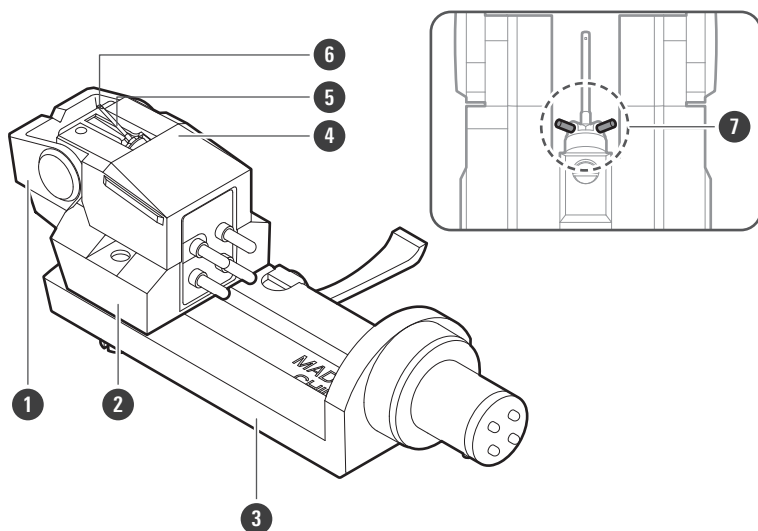
# Name of each part

## Cartridge



- 1 Protector
- 2 Cartridge body
- 3 Output terminals
- 4 Stylus (replacement stylus)
- 5 Cantilever
- 6 Stylus tip
- 7 Magnet

## Cartridge with headshell



- 1 Protector
- 2 Cartridge body
- 3 Headshell
- 4 Stylus (replacement stylus)
- 5 Cantilever
- 6 Stylus tip

## Name of each part

- 5 Cantilever
- 6 Stylus tip
- 7 Magnet

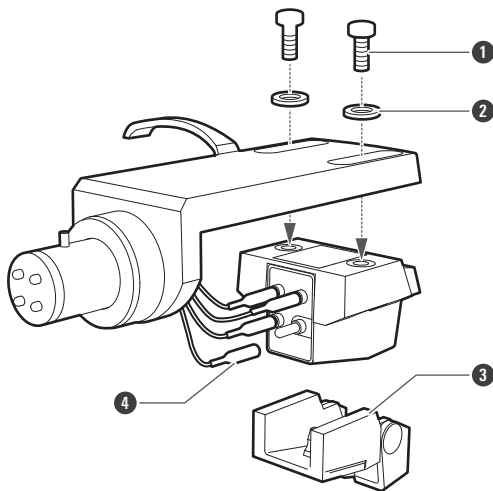
# Using the product

## Cartridge

- Remove the stylus (replacement stylus) before installing the product.
- The product is extremely delicate. Handle it with sufficient care.

### 1 Mount the product onto the headshell or headshell-integrated tonearm.

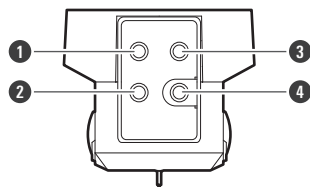
- Temporarily tighten the screws.



- 1 Screw
- 2 Washer
- 3 Stylus (replacement stylus)
- 4 Lead tip

### 2 Connect the lead tips, noting output polarity.

- Connect the headshell lead tips to the product output terminals (as shown in the figure).
- Never apply heat (from solder, etc.) to the output terminals.



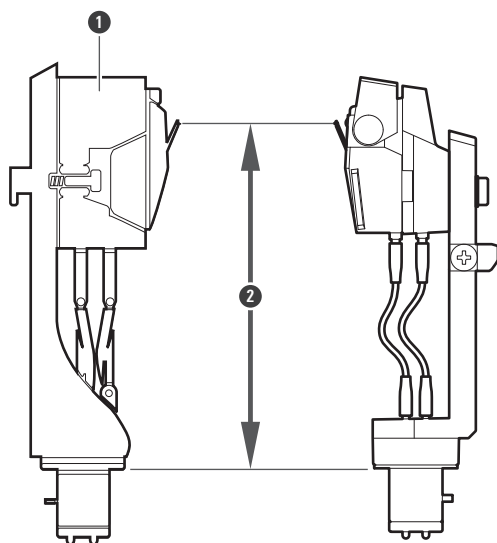
- 1 White (left channel / +)
- 2 Blue (left channel / -)
- 3 Red (right channel / +)
- 4 Green (right channel / -)

### 3 Determine the correct position for installing the product (adjust overhang).

- Adjust overhang following the instructions in the tonearm's, turntable's, or headshell's user manual. If you are unsure, align the stylus tip to the cartridge originally attached to the tonearm (as shown in the figure).

## Using the product

- Finish tightening screws, making sure there is a balance between left and right.



- ❶ Cartridge that came with the turntable
- ❷ Match this distance as closely as possible

### 4 Adjust tracking force.

- Confirm the tracking force for the product in "Specifications" (p. 13).
- Make sure to use the product with the tracking force within the range shown in "Specifications" (p. 13).  
Applying more tracking force than necessary may not only damage the record and stylus but impair audio quality.

### 5 Adjust tonearm height.

- Adjust the height so that the bottom surface of the headshell and the record surface are parallel, as seen from the side. An improper tonearm height may cause the body of the product to make contact with the record and could impair audio quality or damage the record.
- For subsequent steps, read the user manuals of the turntable.

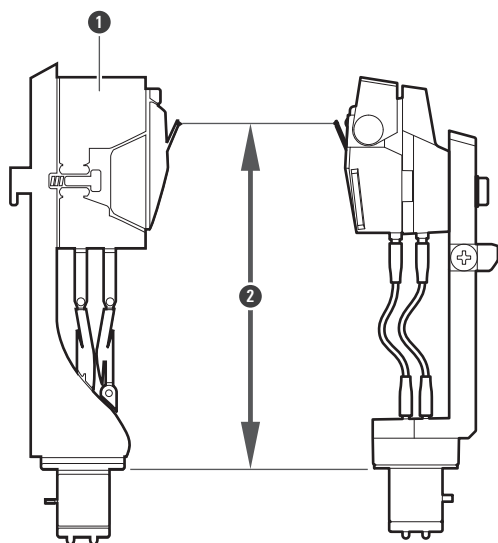
## Cartridge with headshell

- Remove the stylus (replacement stylus) before installing the product.
- The product is extremely delicate. Handle it with sufficient care.

### 1 Determine the correct position for installing the product (adjust overhang).

- Adjust overhang following the instructions in the tonearm's, turntable's, or headshell's user manual. If you are unsure, align the stylus tip to the cartridge originally attached to the tonearm (as shown in the figure).
- Finish tightening screws, making sure there is a balance between left and right.

## Using the product



- ❶ Cartridge that came with the turntable
- ❷ Match this distance as closely as possible

### 2 Adjust tracking force.

- Confirm the tracking force for the product in "Specifications" (p. 13).
- Make sure to use the product with the tracking force within the range shown in "Specifications" (p. 13).  
Applying more tracking force than necessary may not only damage the record and stylus but impair audio quality.

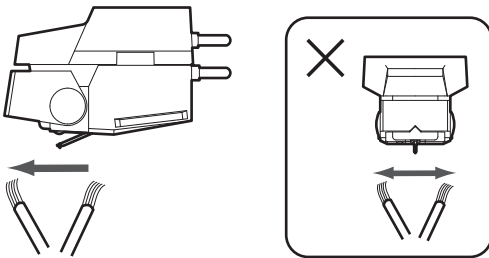
### 3 Adjust tonearm height.

- Adjust the height so that the bottom surface of the headshell and the record surface are parallel, as seen from the side. An improper tonearm height may cause the body of the product to make contact with the record and could impair audio quality or damage the record.
- For subsequent steps, read the user manuals of the turntable.



# Care

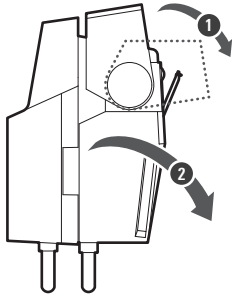
- Use a brush to remove dirt and dust on the stylus tip.
- Always move the brush in the direction in which the record rotates.



- If using a stylus cleaner, we recommend the stylus cleaner sold separately by Audio-Technica.
- Make sure to use the stylus cleaner correctly by first reading its user manual. Using it incorrectly could damage the stylus tip and cause it to malfunction.

# Replacing the stylus

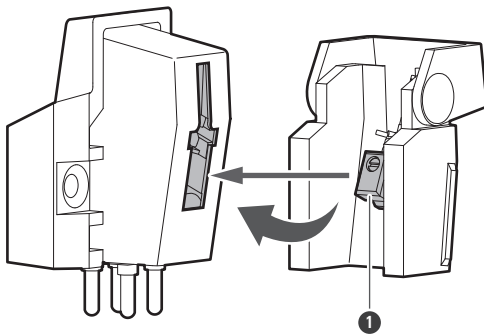
- 1 Remove the replacement stylus by pulling it in the direction of the arrow without touching the cantilever, stylus tip, and magnet.**



- 1** Pull down
- 2** Pull

- 2 Install a new replacement stylus onto the cartridge body.**

- Lifetime of the replacement stylus is as shown below.



- 1** Align the position of the inner protrusion.

## Lifetime of replacement stylus

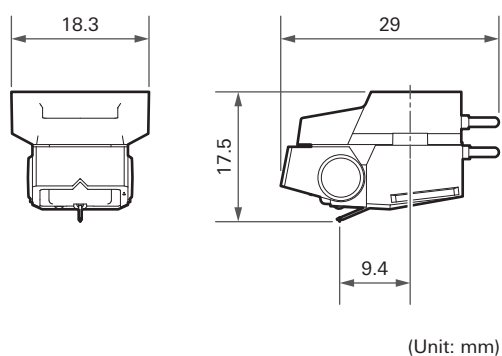
Refer to the specifications for the type of the replacement stylus included with each cartridge.

Replacement stylus type	Lifetime
AT-VMN60xSL AT-VMN50xSH	Approx. 800 hours
AT-VMN45xML AT-VMN40xML	Approx. 1,000 hours
AT-VMN30xEN AT-VMN20xEB	Approx. 300 hours
AT-VMN10xCB AT-VMN70xSP	Approx. 300 to 500 hours

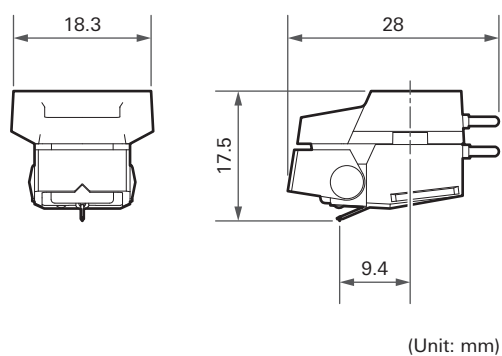
# Dimensions

## Cartridge

### AT-VM700x series

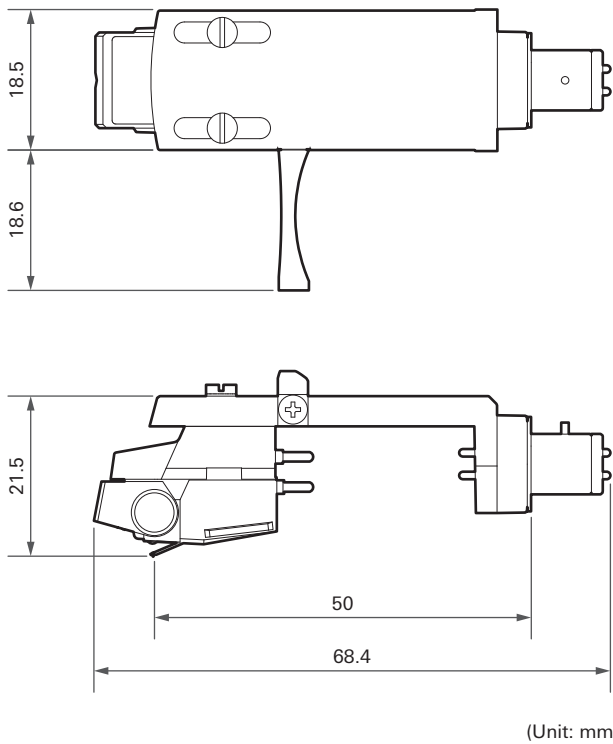


### AT-VM600x/500x series

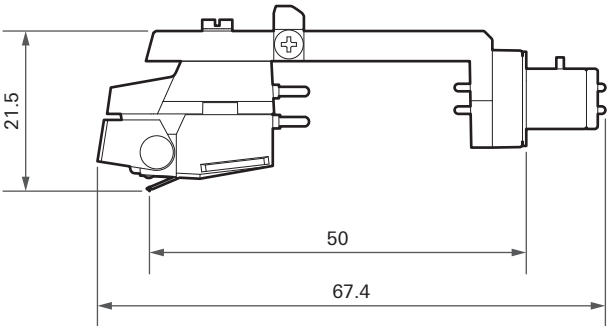
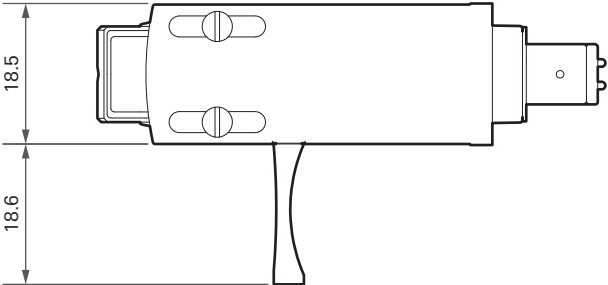


### Cartridge with headshell

#### AT-VM700x/H series



AT-VM500x/H series



(Unit: mm)

# Specifications

## Cartridge

### AT-VM760xSL

Type	VM
Frequency response	20 to 30,000 Hz
Output voltage	3.7 mV (1 kHz, 5 cm/sec.)
Channel separation	26 dB (1 kHz)
Output balance	1.0 dB (1 kHz)
Tracking force	1.8 to 2.2 g (2.0 g standard)
Coil impedance	3.2 k ohms (1 kHz)
DC resistance	750 ohms
Recommended load impedance	47 k ohms
Recommended load capacitance	150 to 250 pF
Coil inductance	480 mH (1 kHz)
Static compliance	$17.5 \times 10^{-6}$ cm/dyne
Dynamic compliance	$7 \times 10^{-6}$ cm/dyne (100 Hz)
Stylus	Special line contact
Stylus curvature radius	$1.5 \times 0.28$ mil
Cantilever	0.28 mm (0.011") diameter solid boron
Vertical tracking angle	20°
Dimensions	17.5 mm (0.69") × 18.3 mm (0.72") × 29.0 mm (1.1") (H × W × D)
Threaded holes	M2.6 × 2
Weight	8.8 g (0.31 oz)
Replacement stylus (sold separately) <sup>[1]</sup>	AT-VMN60xSL
Accessories <sup>[2]</sup>	Cartridge installation screws (M2.6) (10.0 mm [0.39"] × 2, 8.0 mm [0.31"] × 2, 5.0 mm [0.20"] × 2), Washer × 2, Non-magnetic screwdriver, Brush

[1] The replacement stylus of this product is used for AT-VMx series products. In this series, we offer replacement styli with different stylus tip structures and point shapes. For more details, visit the Audio-Technica website.

[2] The product includes two 5.0 mm (0.20") cartridge installation screws that are used for securing the cartridge inside the box. After removing the cartridge from the box, store the screws carefully to prevent them from being lost.

- For product improvement, the product is subject to modification without notice.

## Specifications

### AT-VM750xSH

<b>Type</b>	VM
<b>Frequency response</b>	20 to 27,000 Hz
<b>Output voltage</b>	3.7 mV (1 kHz, 5 cm/sec.)
<b>Channel separation</b>	26 dB (1 kHz)
<b>Output balance</b>	1.0 dB (1 kHz)
<b>Tracking force</b>	1.8 to 2.2 g (2.0 g standard)
<b>Coil impedance</b>	3.2 k ohms (1 kHz)
<b>DC resistance</b>	750 ohms
<b>Recommended load impedance</b>	47 k ohms
<b>Recommended load capacitance</b>	150 to 250 pF
<b>Coil inductance</b>	480 mH (1 kHz)
<b>Static compliance</b>	$20 \times 10^{-6}$ cm/dyne
<b>Dynamic compliance</b>	$7 \times 10^{-6}$ cm/dyne (100 Hz)
<b>Stylus</b>	Nude Shibata
<b>Stylus curvature radius</b>	$2.7 \times 0.26$ mil
<b>Cantilever</b>	0.28 mm (0.011") diameter solid boron
<b>Vertical tracking angle</b>	20°
<b>Dimensions</b>	17.5 mm (0.69") $\times$ 18.3 mm (0.72") $\times$ 29.0 mm (1.1") (H $\times$ W $\times$ D)
<b>Threaded holes</b>	M2.6 $\times$ 2
<b>Weight</b>	8.8 g (0.31 oz)
<b>Replacement stylus (sold separately) <sup>[1]</sup></b>	AT-VMN50xSH
<b>Accessories <sup>[2]</sup></b>	Cartridge installation screws (M2.6) (10.0 mm [0.39"] $\times$ 2, 8.0 mm [0.31"] $\times$ 2, 5.0 mm [0.20"] $\times$ 2), Washer $\times$ 2, Non-magnetic screwdriver, Brush

[1] The replacement stylus of this product is used for AT-VMx series products. In this series, we offer replacement styli with different stylus tip structures and point shapes. For more details, visit the Audio-Technica website.

[2] The product includes two 5.0 mm (0.20") cartridge installation screws that are used for securing the cartridge inside the box. After removing the cartridge from the box, store the screws carefully to prevent them from being lost.

- For product improvement, the product is subject to modification without notice.

## Specifications

### AT-VM745xML

<b>Type</b>	VM
<b>Frequency response</b>	20 to 27,000 Hz
<b>Output voltage</b>	3.7 mV (1 kHz, 5 cm/sec.)
<b>Channel separation</b>	26 dB (1 kHz)
<b>Output balance</b>	1.0 dB (1 kHz)
<b>Tracking force</b>	1.8 to 2.2 g (2.0 g standard)
<b>Coil impedance</b>	3.2 k ohms (1 kHz)
<b>DC resistance</b>	750 ohms
<b>Recommended load impedance</b>	47 k ohms
<b>Recommended load capacitance</b>	150 to 250 pF
<b>Coil inductance</b>	480 mH (1 kHz)
<b>Static compliance</b>	$20 \times 10^{-6}$ cm/dyne
<b>Dynamic compliance</b>	$7 \times 10^{-6}$ cm/dyne (100 Hz)
<b>Stylus</b>	Nude Microlinear
<b>Stylus curvature radius</b>	$2.2 \times 0.12$ mil
<b>Cantilever</b>	0.28 mm (0.011") diameter solid boron
<b>Vertical tracking angle</b>	20°
<b>Dimensions</b>	17.5 mm (0.69") $\times$ 18.3 mm (0.72") $\times$ 29.0 mm (1.1") (H $\times$ W $\times$ D)
<b>Threaded holes</b>	M2.6 $\times$ 2
<b>Weight</b>	8.8 g (0.31 oz)
<b>Replacement stylus (sold separately) <sup>[1]</sup></b>	AT-VMN45xML
<b>Accessories <sup>[2]</sup></b>	Cartridge installation screws (M2.6) (10.0 mm [0.39"] $\times$ 2, 8.0 mm [0.31"] $\times$ 2, 5.0 mm [0.20"] $\times$ 2), Washer $\times$ 2, Non-magnetic screwdriver, Brush

[1] The replacement stylus of this product is used for AT-VMx series products. In this series, we offer replacement styli with different stylus tip structures and point shapes. For more details, visit the Audio-Technica website.

[2] The product includes two 5.0 mm (0.20") cartridge installation screws that are used for securing the cartridge inside the box. After removing the cartridge from the box, store the screws carefully to prevent them from being lost.

- For product improvement, the product is subject to modification without notice.



## Specifications

### AT-VM740xML

<b>Type</b>	VM
<b>Frequency response</b>	20 to 25,000 Hz
<b>Output voltage</b>	3.2 mV (1 kHz, 5 cm/sec.)
<b>Channel separation</b>	25 dB (1 kHz)
<b>Output balance</b>	1.0 dB (1 kHz)
<b>Tracking force</b>	1.8 to 2.2 g (2.0 g standard)
<b>Coil impedance</b>	3.2 k ohms (1 kHz)
<b>DC resistance</b>	750 ohms
<b>Recommended load impedance</b>	47 k ohms
<b>Recommended load capacitance</b>	150 to 250 pF
<b>Coil inductance</b>	480 mH (1 kHz)
<b>Static compliance</b>	$20 \times 10^{-6}$ cm/dyne
<b>Dynamic compliance</b>	$7 \times 10^{-6}$ cm/dyne (100 Hz)
<b>Stylus</b>	Nude Microlinear
<b>Stylus curvature radius</b>	$2.2 \times 0.12$ mil
<b>Cantilever</b>	Tapered aluminum pipe
<b>Vertical tracking angle</b>	20°
<b>Dimensions</b>	17.5 mm (0.69") $\times$ 18.3 mm (0.72") $\times$ 29.0 mm (1.1") (H $\times$ W $\times$ D)
<b>Threaded holes</b>	M2.6 $\times$ 2
<b>Weight</b>	8.8 g (0.31 oz)
<b>Replacement stylus (sold separately) <sup>[1]</sup></b>	AT-VMN40xML
<b>Accessories <sup>[2]</sup></b>	Cartridge installation screws (M2.6) (10.0 mm [0.39"] $\times$ 2, 8.0 mm [0.31"] $\times$ 2, 5.0 mm [0.20"] $\times$ 2), Washer $\times$ 2, Non-magnetic screwdriver, Brush

[1] The replacement stylus of this product is used for AT-VMx series products. In this series, we offer replacement styli with different stylus tip structures and point shapes. For more details, visit the Audio-Technica website.

[2] The product includes two 5.0 mm (0.20") cartridge installation screws that are used for securing the cartridge inside the box. After removing the cartridge from the box, store the screws carefully to prevent them from being lost.

- For product improvement, the product is subject to modification without notice.

## Specifications

### AT-VM530xEN

<b>Type</b>	VM
<b>Frequency response</b>	20 to 25,000 Hz
<b>Output voltage</b>	3.2 mV (1 kHz, 5 cm/sec.)
<b>Channel separation</b>	25 dB (1 kHz)
<b>Output balance</b>	1.5 dB (1 kHz)
<b>Tracking force</b>	1.8 to 2.2 g (2.0 g standard)
<b>Coil impedance</b>	3.2 k ohms (1 kHz)
<b>DC resistance</b>	750 ohms
<b>Recommended load impedance</b>	47 k ohms
<b>Recommended load capacitance</b>	150 to 250 pF
<b>Coil inductance</b>	480 mH (1 kHz)
<b>Static compliance</b>	$23 \times 10^{-6}$ cm/dyne
<b>Dynamic compliance</b>	$7 \times 10^{-6}$ cm/dyne (100 Hz)
<b>Stylus</b>	Nude elliptical
<b>Stylus curvature radius</b>	0.3 × 0.7 mil
<b>Cantilever</b>	Aluminum pipe
<b>Vertical tracking angle</b>	20°
<b>Dimensions</b>	17.5 mm (0.69") × 18.3 mm (0.72") × 28.0 mm (1.1") (H × W × D)
<b>Threaded holes</b>	M2.6 × 2
<b>Weight</b>	7.2 g (0.25 oz)
<b>Replacement stylus (sold separately) <sup>[1]</sup></b>	AT-VMN30xEN
<b>Accessories <sup>[2]</sup></b>	Cartridge installation screws (M2.6) (10.0 mm [0.39"] × 2, 8.0 mm [0.31"] × 2, 5.0 mm [0.20"] × 2), Washer × 2

[1] The replacement stylus of this product is used for AT-VMx series products. In this series, we offer replacement styli with different stylus tip structures and point shapes. For more details, visit the Audio-Technica website.

[2] The product includes two 5.0 mm (0.20") cartridge installation screws that are used for securing the cartridge inside the box. After removing the cartridge from the box, store the screws carefully to prevent them from being lost.

- For product improvement, the product is subject to modification without notice.

## Specifications

### AT-VM520xEB

<b>Type</b>	VM
<b>Frequency response</b>	20 to 20,000 Hz
<b>Output voltage</b>	5.0 mV (1 kHz, 5 cm/sec.)
<b>Channel separation</b>	24 dB (1 kHz)
<b>Output balance</b>	1.5 dB (1 kHz)
<b>Tracking force</b>	1.8 to 2.2 g (2.0 g standard)
<b>Coil impedance</b>	3.2 k ohms (1 kHz)
<b>DC resistance</b>	750 ohms
<b>Recommended load impedance</b>	47 k ohms
<b>Recommended load capacitance</b>	150 to 250 pF
<b>Coil inductance</b>	480 mH (1 kHz)
<b>Static compliance</b>	$23 \times 10^{-6}$ cm/dyne
<b>Dynamic compliance</b>	$7 \times 10^{-6}$ cm/dyne (100 Hz)
<b>Stylus</b>	Elliptical bonded
<b>Stylus curvature radius</b>	0.3 × 0.7 mil
<b>Cantilever</b>	Aluminum pipe
<b>Vertical tracking angle</b>	20°
<b>Dimensions</b>	17.5 mm (0.69") × 18.3 mm (0.72") × 28.0 mm (1.1") (H × W × D)
<b>Threaded holes</b>	M2.6 × 2
<b>Weight</b>	7.2 g (0.25 oz)
<b>Replacement stylus (sold separately) <sup>[1]</sup></b>	AT-VMN20xEB
<b>Accessories <sup>[2]</sup></b>	Cartridge installation screws (M2.6) (10.0 mm [0.39"] × 2, 8.0 mm [0.31"] × 2, 5.0 mm [0.20"] × 2), Washer × 2

[1] The replacement stylus of this product is used for AT-VMx series products. In this series, we offer replacement styli with different stylus tip structures and point shapes. For more details, visit the Audio-Technica website.

[2] The product includes two 5.0 mm (0.20") cartridge installation screws that are used for securing the cartridge inside the box. After removing the cartridge from the box, store the screws carefully to prevent them from being lost.

- For product improvement, the product is subject to modification without notice.

## Specifications

### AT-VM510xCB

<b>Type</b>	VM
<b>Frequency response</b>	20 to 20,000 Hz
<b>Output voltage</b>	5.0 mV (1 kHz, 5 cm/sec.)
<b>Channel separation</b>	24 dB (1 kHz)
<b>Output balance</b>	1.5 dB (1 kHz)
<b>Tracking force</b>	1.8 to 2.2 g (2.0 g standard)
<b>Coil impedance</b>	3.2 k ohms (1 kHz)
<b>DC resistance</b>	750 ohms
<b>Recommended load impedance</b>	47 k ohms
<b>Recommended load capacitance</b>	150 to 250 pF
<b>Coil inductance</b>	480 mH (1 kHz)
<b>Static compliance</b>	$23 \times 10^{-6}$ cm/dyne
<b>Dynamic compliance</b>	$7 \times 10^{-6}$ cm/dyne (100 Hz)
<b>Stylus</b>	Conical bonded
<b>Stylus curvature radius</b>	0.6 mil
<b>Cantilever</b>	Aluminum pipe
<b>Vertical tracking angle</b>	20°
<b>Dimensions</b>	17.5 mm (0.69") × 18.3 mm (0.72") × 28.0 mm (1.1") (H × W × D)
<b>Threaded holes</b>	M2.6 × 2
<b>Weight</b>	7.2 g (0.25 oz)
<b>Replacement stylus (sold separately) <sup>[1]</sup></b>	AT-VMN10xCB
<b>Accessories <sup>[2]</sup></b>	Cartridge installation screws (M2.6) (10.0 mm [0.39"] × 2, 8.0 mm [0.31"] × 2, 5.0 mm [0.20"] × 2), Washer × 2

[1] The replacement stylus of this product is used for AT-VMx series products. In this series, we offer replacement styli with different stylus tip structures and point shapes. For more details, visit the Audio-Technica website.

[2] The product includes two 5.0 mm (0.20") cartridge installation screws that are used for securing the cartridge inside the box. After removing the cartridge from the box, store the screws carefully to prevent them from being lost.

- For product improvement, the product is subject to modification without notice.

## Specifications

### AT-VM610xMONO

<b>Type</b>	VM
<b>Frequency response</b>	20 to 20,000 Hz
<b>Output voltage</b>	5.0 mV (1 kHz, 5 cm/sec.)
<b>Horizontal/vertical output ratio</b>	20 dB (1 kHz)
<b>Tracking force</b>	1.8 to 2.2 g (2.0 g standard)
<b>Coil impedance</b>	1.6 k ohms (1 kHz)
<b>DC resistance</b>	375 ohms
<b>Recommended load impedance</b>	47 k ohms
<b>Recommended load capacitance</b>	150 to 250 pF
<b>Coil inductance</b>	240 mH (1 kHz)
<b>Static compliance</b>	$23 \times 10^{-6}$ cm/dyne
<b>Dynamic compliance</b>	$7 \times 10^{-6}$ cm/dyne (100 Hz)
<b>Stylus</b>	Conical bonded
<b>Stylus curvature radius</b>	0.6 mil
<b>Cantilever</b>	Aluminum pipe
<b>Vertical tracking angle</b>	20°
<b>Dimensions</b>	17.5 mm (0.69") × 18.3 mm (0.72") × 28.0 mm (1.1") (H × W × D)
<b>Threaded holes</b>	M2.6 × 2
<b>Weight</b>	7.2 g (0.25 oz)
<b>Replacement stylus (sold separately) <sup>[1]</sup></b>	AT-VMN10xCB
<b>Accessories <sup>[2]</sup></b>	Cartridge installation screws (M2.6) (10.0 mm [0.39"] × 2, 8.0 mm [0.31"] × 2, 5.0 mm [0.20"] × 2), Washer × 2

[1] The replacement stylus of this product is used for AT-VMx series products. In this series, we offer replacement styli with different stylus tip structures and point shapes. For more details, visit the Audio-Technica website.

[2] The product includes two 5.0 mm (0.20") cartridge installation screws that are used for securing the cartridge inside the box. After removing the cartridge from the box, store the screws carefully to prevent them from being lost.

- For product improvement, the product is subject to modification without notice.

## Specifications

### AT-VM670xSP

<b>Type</b>	VM
<b>Frequency response</b>	20 to 20,000 Hz
<b>Output voltage</b>	4.7 mV (1 kHz, 5 cm/sec.)
<b>Horizontal/vertical output ratio</b>	20 dB (1 kHz)
<b>Tracking force</b>	4.5 to 5.5 g (5.0 g standard)
<b>Coil impedance</b>	1.6 k ohms (1 kHz)
<b>DC resistance</b>	375 ohms
<b>Recommended load impedance</b>	47 k ohms
<b>Recommended load capacitance</b>	150 to 250 pF
<b>Coil inductance</b>	240 mH (1 kHz)
<b>Static compliance</b>	$23 \times 10^{-6}$ cm/dyne
<b>Stylus</b>	Conical bonded
<b>Stylus curvature radius</b>	3.0 mil
<b>Cantilever</b>	Aluminum pipe
<b>Vertical tracking angle</b>	20°
<b>Dimensions</b>	17.5 mm (0.69") × 18.3 mm (0.72") × 28.0 mm (1.1") (H × W × D)
<b>Threaded holes</b>	M2.6 × 2
<b>Weight</b>	7.2 g (0.25 oz)
<b>Replacement stylus (sold separately) <sup>[1]</sup></b>	AT-VMN70xSP
<b>Accessories <sup>[2]</sup></b>	Cartridge installation screws (M2.6) (10.0 mm [0.39"] × 2, 8.0 mm [0.31"] × 2, 5.0 mm [0.20"] × 2), Washer × 2

[1] The replacement stylus of this product is used for AT-VMx series products. In this series, we offer replacement styli with different stylus tip structures and point shapes. For more details, visit the Audio-Technica website.

[2] The product includes two 5.0 mm (0.20") cartridge installation screws that are used for securing the cartridge inside the box. After removing the cartridge from the box, store the screws carefully to prevent them from being lost.

- For product improvement, the product is subject to modification without notice.

### Cartridge with headshell

#### AT-VM750xSH/H

Type	VM
Frequency response	20 to 27,000 Hz
Output voltage	3.7 mV (1 kHz, 5 cm/sec.)
Channel separation	26 dB (1 kHz)
Output balance	1.0 dB (1 kHz)
Tracking force	1.8 to 2.2 g (2.0 g standard)
Coil impedance	3.2 k ohms (1 kHz)
DC resistance	750 ohms
Recommended load impedance	47 k ohms
Recommended load capacitance	150 to 250 pF
Coil inductance	480 mH (1 kHz)
Static compliance	$20 \times 10^{-6}$ cm/dyne
Dynamic compliance	$7 \times 10^{-6}$ cm/dyne (100 Hz)
Stylus	Nude Shibata
Stylus curvature radius	$2.7 \times 0.26$ mil
Cantilever	0.28 mm (0.011") diameter solid boron
Vertical tracking angle	20°
Dimensions	21.5 mm (0.85") × 18.5 mm (0.73") × 68.4 mm (2.7") (H × W × D)
Weight	20.3 g (0.72 oz)
Replacement stylus (sold separately) <sup>[1]</sup>	AT-VMN50xSH

[1] The replacement stylus of this product is used for AT-VMx series products. In this series, we offer replacement styli with different stylus tip structures and point shapes. For more details, visit the Audio-Technica website.

- For product improvement, the product is subject to modification without notice.

## Specifications

### AT-VM740xML/H

<b>Type</b>	VM
<b>Frequency response</b>	20 to 25,000 Hz
<b>Output voltage</b>	3.2 mV (1 kHz, 5 cm/sec.)
<b>Channel separation</b>	25 dB (1 kHz)
<b>Output balance</b>	1.0 dB (1 kHz)
<b>Tracking force</b>	1.8 to 2.2 g (2.0 g standard)
<b>Coil impedance</b>	3.2 k ohms (1 kHz)
<b>DC resistance</b>	750 ohms
<b>Recommended load impedance</b>	47 k ohms
<b>Recommended load capacitance</b>	150 to 250 pF
<b>Coil inductance</b>	480 mH (1 kHz)
<b>Static compliance</b>	$20 \times 10^{-6}$ cm/dyne
<b>Dynamic compliance</b>	$7 \times 10^{-6}$ cm/dyne (100 Hz)
<b>Stylus</b>	Nude Microlinear
<b>Stylus curvature radius</b>	$2.2 \times 0.12$ mil
<b>Cantilever</b>	Tapered aluminum pipe
<b>Vertical tracking angle</b>	20°
<b>Dimensions</b>	21.5 mm (0.85") × 18.5 mm (0.73") × 68.4 mm (2.7") (H × W × D)
<b>Weight</b>	20.3 g (0.72 oz)
<b>Replacement stylus (sold separately) <sup>[1]</sup></b>	AT-VMN40xML

[1] The replacement stylus of this product is used for AT-VMx series products. In this series, we offer replacement styli with different stylus tip structures and point shapes. For more details, visit the Audio-Technica website.

- For product improvement, the product is subject to modification without notice.



## Specifications

### AT-VM520xEB/H

Type	VM
Frequency response	20 to 20,000 Hz
Output voltage	5.0 mV (1 kHz, 5 cm/sec.)
Channel separation	24 dB (1 kHz)
Output balance	1.5 dB (1 kHz)
Tracking force	1.8 to 2.2 g (2.0 g standard)
Coil impedance	3.2 k ohms (1 kHz)
DC resistance	750 ohms
Recommended load impedance	47 k ohms
Recommended load capacitance	150 to 250 pF
Coil inductance	480 mH (1 kHz)
Static compliance	$23 \times 10^{-6}$ cm/dyne
Dynamic compliance	$7 \times 10^{-6}$ cm/dyne (100 Hz)
Stylus	Elliptical bonded
Stylus curvature radius	0.3 × 0.7 mil
Cantilever	Aluminum pipe
Vertical tracking angle	20°
Dimensions	21.5 mm (0.85") × 18.5 mm (0.73") × 67.4 mm (2.7") (H × W × D)
Weight	18.3 g (0.65 oz)
Replacement stylus (sold separately) <sup>[1]</sup>	AT-VMN20xEB

[1] The replacement stylus of this product is used for AT-VMx series products. In this series, we offer replacement styli with different stylus tip structures and point shapes. For more details, visit the Audio-Technica website.

- For product improvement, the product is subject to modification without notice.

## Replacement stylus

### AT-VMN60xSL

Tracking force	1.8 to 2.2 g (2.0 g standard)
Stylus	Special line contact
Cartridge (sold separately)	AT-VM760xSL

- For product improvement, the product is subject to modification without notice.

## Specifications

### AT-VMN50xSH

<b>Tracking force</b>	1.8 to 2.2 g (2.0 g standard)
<b>Stylus</b>	Nude Shibata
<b>Cartridge (sold separately)</b>	AT-VM750xSH

- For product improvement, the product is subject to modification without notice.

### AT-VMN45xML

<b>Tracking force</b>	1.8 to 2.2 g (2.0 g standard)
<b>Stylus</b>	Nude Microlinear
<b>Cartridge (sold separately)</b>	AT-VM745xML

- For product improvement, the product is subject to modification without notice.

### AT-VMN40xML

<b>Tracking force</b>	1.8 to 2.2 g (2.0 g standard)
<b>Stylus</b>	Nude Microlinear
<b>Cartridge (sold separately)</b>	AT-VM740xML

- For product improvement, the product is subject to modification without notice.

### AT-VMN30xEN

<b>Tracking force</b>	1.8 to 2.2 g (2.0 g standard)
<b>Stylus</b>	Nude elliptical
<b>Cartridge (sold separately)</b>	AT-VM530xEN

- For product improvement, the product is subject to modification without notice.

### AT-VMN20xEB

<b>Tracking force</b>	1.8 to 2.2 g (2.0 g standard)
<b>Stylus</b>	Elliptical bonded
<b>Cartridge (sold separately)</b>	AT-VM520xEB

- For product improvement, the product is subject to modification without notice.

## Specifications

### AT-VMN10xCB

<b>Tracking force</b>	1.8 to 2.2 g (2.0 g standard)
<b>Stylus</b>	Conical bonded
<b>Cartridge (sold separately)</b>	AT-VM510xCB, AT-VM610xMONO

- For product improvement, the product is subject to modification without notice.

### AT-VMN70xSP

<b>Tracking force</b>	4.5 to 5.5 g (5.0 g standard)
<b>Stylus</b>	Conical bonded (3.0 mil)
<b>Cartridge (sold separately)</b>	AT-VM670xSP

- For product improvement, the product is subject to modification without notice.

**株式会社オーディオテクニカ**

〒194-8666 東京都町田市西成瀬2-46-1  
[www.audio-technica.co.jp](http://www.audio-technica.co.jp)

**Audio-Technica Corporation**

2-46-1 Nishi-naruse, Machida, Tokyo 194-8666, Japan  
[www.audio-technica.com](http://www.audio-technica.com)  
©2025 Audio-Technica Corporation  
Global Support Contact: [www.at-globalsupport.com](http://www.at-globalsupport.com)